

Reasonable Modification Notice

Reasonable modifications to our service may be possible to accommodate an individual with a disability provided that the modification does not result in a fundamental alteration of our service or a direct threat to the health and safety of others.

If you wish to request a reasonable modification or have a service concern, please contact our office at **(215) 542-7433 (RIDE)** or visit our website at **www.suburbantransit.org**.

Cost

- Qualified participants receive an 85% discount on all rides.
- Fares range from \$4.25 to \$7.50 and are based on distance traveled.
- All riders must bring exact change.



TransNet
SUBURBAN TRANSIT NETWORK, INC.

Suburban Transit Network, Inc.
Union Meeting Corporate Center
980 Harvest Drive, Suite 100
Blue Bell, PA 19422-1955

(215) 542-7433 (RIDE)
Fax: (215) 542-8877
ride@suburbantransit.org

Forms must be mailed to:

TransNet
PwD Program
980 Harvest Drive, Suite 100
Blue Bell, PA 19422-1955
or faxed to
(215) 542-8877

www.suburbantransit.org

TransNet
SUBURBAN TRANSIT NETWORK, INC.

Transportation for Persons with Disabilities



*Providing transportation
options for eligible
Montgomery County residents*

(215) 542-7433 • www.suburbantransit.org



@TransNetPA
#TakeTransNet

Transportation for Persons with Disabilities

Who we are

Suburban Transit Network, Inc. (TransNet) is under contract with the Pennsylvania Department of Transportation to provide the Persons with Disabilities (PwD) Program in Montgomery County. TransNet currently provides the Senior Citizen Shared Ride Program, Medical Assistance Transportation Program and many other transit services for Montgomery County residents.



Who is eligible

- If you are between the ages of 18-64
- If you are a Montgomery County resident
- If you have any disability defined by the Americans with Disabilities Act (ADA)
- If you have proof of your disability from a professional
- If you completed the Persons with Disabilities Program registration/eligibility form...

Are there other transportation services for persons with disabilities?

Yes, if you also qualify for any of these services, you must use them instead of the PwD program.

- SEPTA ADA Complementary Paratransit Service (CCT Connect)
- Pottstown Area Rapid Transit (PART) Complementary Paratransit Service
- TransNet Medical Assistance Transportation Program, if you are low income and traveling to a medical appointment
- Montgomery County Aging and Adult Services, if you are between the ages of 60-64

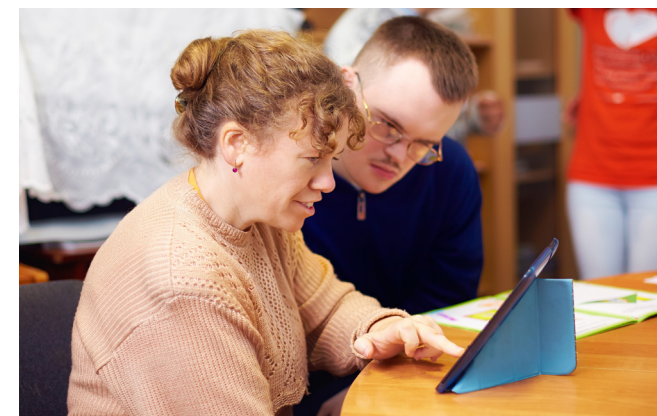
Information

- This is a “by reservation only”, curb-to-curb service
- Door-to-door service is available, if requested
- You can make a reservation by calling one day to two weeks in advance. For a Sunday or Monday trip, call on Friday before 3:30 pm.

- This is a “shared ride service” so you will share the vehicle with others traveling in the same area at the same time.
- Service days and hours vary depending on where you live. Contact TransNet at **(215) 542-7433 (RIDE)** for more information or visit our website at **www.suburbantransit.org** to view a service area map.

How do I apply?

Eligibility/registration forms may be obtained by calling TransNet at **(215) 542-7433 (RIDE)** or by visiting our website at **www.suburbantransit.org**. Forms and other information are also available in large print. If you do not speak English we will arrange for a personal interpreter to translate for you.



(215) 542-7433 • **www.suburbantransit.org**



@TransNetPA
#TakeTransNet

...YOU ARE QUALIFIED!